



Marine Engine Compartment Heaters



Owner's Manual

The Xtreme Heater has been tested for the ignition protection requirements of the ABYC E11, the USCG, ISO 8846 and SAE J1171

980 Gainesville Highway • Buford, GA 30518 • PHONE (404)435-4328 • FAX (678)550-9876

www.XtremeHeaters.com



Introduction

Congratulations on your purchase! Xtreme Heaters have been designed by boaters for boaters and are quality engineered products to help you get the most use out of your boat. Careful attention to these Installation Instructions will assure trouble free operation and maximum performance from your Xtreme Heater.

CAUTION: Read and follow these instructions carefully when performing installation. Deviation from these installation instructions could void your warranty or cause an electrical short or other hazard.

Your Xtreme Heater

Your 300/450/600 watt, forced-air, temperature regulated heater is designed to provide a reliable heating source. When installed and operated in accordance with the manufacturer's specifications, your heater will provide many years maintenance free operation. The heater is factory calibrated to operate when the engine compartment temperature falls below 40° F (approximately), and to continue operating until an ambient temperature of 55° F (approximately) has been attained. By operating within this temperature range, extreme cold conditions are avoided. All heaters are sealed as there are no user serviceable components. Please do not attempt to open or alter your heater as this will void your warranty. Contact the manufacturer for any servicing required. www.xtrememheaters.com (404) 435-4328

Installing your Xtreme Heater

By examining your engine compartment, you can determine a suitable location to mount your heater by keeping certain considerations in mind. The unit should be mounted on metal, fiberglass, or a marine rated wood surface in the engine compartment. The heater can be mounted at any angle (i.e. sideways, upside down, etc.) The heater should be located in an area free and clear of loose material or moving parts that could come in contact with the heater.

You should allow a minimum 12 inch clearance from the vents (intake and exhaust) to the closest object. For best results, the heater should be positioned close engine and running gear. For stern drive boats, this would be toward the rear of the boat, where the engine meets the stern drive. For a V drive boat it aim your heater toward the engine/transmission connection. The heater should not be mounted close to the bilge vents or other openings where it could draw in cold, outside air.

The heater comes supplied with stainless screws for the typical installation; however, care must be taken so that screws do not penetrate any tanks or other vital boat components. You must know what is behind the mounting surface so that screws are assured proper clearance. Some will choose not to mount the heater permanently. If so, please make sure that the heater will not fall or be turned over at any time. Also keep water in the bilge from coming into contact with the electrical components of the heater.

There should be no electrical cords or other obstruction directly under or around the heater to allow air to circulate under and around the heater. The power cord should be run to an outlet that provides a minimum 15 AMP 120 Volt circuit and is equipped with a slow blow fuse or circuit breaker. If you have questions about these recommendations, you should consult a certified professional for help. In accordance with generally accepted industry standards such as ABYS, NEC, NFPA and US Coastguard **the power connection (outlet or circuit breaker) must be external to the engine compartment. Breaker equipped models offer an accessible reset button that should be pressed if an electrical problem is suspected.** Be sure to mount the heater and route the power cord where it will not be expose or immersed in water. The heater should not contact any flammable substances. NOTE: Some marina rules, local codes/ordinances, etc. may apply to your installation. Please be sure that any additional local laws and requirements are followed when installing your Xtreme Heater.

NOTE: It is advised that you obtain the services of a qualified marine electrician to inspect and evaluate the wiring of your boat to certify that it is capable of handling the current loads (15Amp) of the heater.

Installation examples, DO's and DON'Ts :

- **DO** mount your heater where the inlet and outlet vents are not obstructed and heat is directed towards the engine(s) and running gear(s). These pictures show mountings that are preferable.



- **AVOID** mounting the heater to any tanks (water, gas, holding, etc), or any equipment such as the air conditioner, water heater, or generator. **AVOID** mounting the heater on or near any moving parts. These are pictures that illustrate **unacceptable** ways to mount your heater.



Testing your Xtreme Heater

The LED power light on all Xtreme Heaters indicate that you heater is powered up and ready for use. If you would like to test your heater further by simulating freezing conditions this can be accomplished using



off the shelf refrigerant spray commonly found in electronics supply stores and also available from Xtreme. To simulate freezing conditions, spray the test port labeled on your heater where the thermostat control is located. By spraying this test port for 3 to 4 seconds, you can simulate the low temperature condition that will turn the heater

on. The fan should start instantly and heat can typically be felt within a few seconds. It is a good idea to test your heater periodically and at the start of each cold season to insure operation. If you try to put the heater in the freezer or other cold environments to test, it may take up to an hour for the metal to cool enough to trip the thermostat.

Note: It is a good idea to test your heater after the boat has been serviced by a third party.



Additional Information and Specifications

- Maximum current consumption @ 115 VAC is 15A
- All parts are UL, CSA, and VDE approved built within a plant that is ISO 9001 or ISO9002 certified
- Fully anodized inside and out for superior protection
- Full one (1) year warranty
- PTC (Positive Temperature Coefficient) heater design assures safety
- Dynamic, self regulating, and therefore energy efficient and economical
- Xtreme Heaters all have a robust construction utilizing an anodized aluminum extruded casing and a high temperature plastic molding coupled to a high quality fan. The heating element was specifically designed for Xtreme Heaters to provide redundant, failsafe protection against overheating.

The Xtreme Heater has been tested for the ignition protection requirements of the ABYC E11, the USCG, ISO 8846 and SAE J1171

Email or call for assistance: info@xtremeheaters.com or (404) 435-HEAT(4328)

IMPORTANT “TIPS” REGARDING THE OPERATION OF YOUR NEW COMPARTMENT HEATER

TIPS: Your Xtreme Heater will operate more efficiently when you have covers over the bilge blower vents on your boat. The best method we have found is to have a canvas shop, or an upholstery shop, make a set of simple, inexpensive “snap-on” covers to fit over the vents. When you are ready to use the boat, simply remove the vent covers. When you leave the boat, snap the covers back on. This will keep the cold, damp winter wind out of the engine compartment, and keep the heat in. Without uncovered vents, valuable heat can escape to the outside which could prevent the heater from performing to its full potential. During testing we found this helps temperature rise faster and keep the heat in an average of 40% longer so the heater runs less and saves you money.



TIPS: A boat on a lift or a trailer will get much colder than a boat in the water. If you store your boat suspended on a lift, in addition to covering your bilge blower vents, you might wish to consider covering the outdrive unit. Alternatively, it may help to lower the boat into the water to keep cold air from circulating around the bottom of the boat, and allow the boat to extract heat from the water. You can also use a heavy mil plastic to slip up over the outdrive unit and/or exhaust ports and tie it at the top. This will prevent the heat in the engine compartment from being lost by dissipation through the metal of the outdrive unit. Covering the entire boat helps keep Mother Nature out.



The instructions and recommendations in this manual do not override the factory's recommendations for winterizing water systems on your boat. Please follow the recommended guidelines from the manufacturer of the boat.

Maintenance & Test Log

[illegible]

ONE YEAR LIMITED WARRANTY

Xtreme Heaters warrants your heater to be free from defects in materials and craftsmanship under normal use and service by the original consumer for a period of one (1) year from the date of purchase. This limited warranty does not apply if the heater has been damaged by accident, improper installation, unreasonable use, lack of proper maintenance, unauthorized repairs or modifications, or other causes not originating from defects in materials and craftsmanship.

The obligation of Xtreme Heaters under this warranty is limited to the repair or replacement at Xtreme Heaters discretion, any part or component thereof, which examination discloses to our satisfaction to have been nonconforming or defective. Xtreme Heaters, after establishing customer's purchase date and determining problem to be under warranty, will repair the product at our facility. Transportation charges are the responsibility of the customer.

The foregoing warranty and conditions shall apply to any repaired or replaced products, part or component supplied by Xtreme Heaters. Xtreme Heaters shall in no event be liable to BUYER for any incidental or consequential damages, or loss of use, or other losses, however occasioned.

Implied Warranties of merchantability and of the fitness of the product for any purpose are warranted for a period of one (1) year on parts and labor. Xtreme Heaters makes no warranties, expressed or implied after that time. This warranty gives you specific legal rights, and you may also have other rights which vary from state to state.

Please call 404-435-HEAT(4328) to obtain an RMA number prior to returning product.

Please make all returns to Xtreme Heaters if there is a product error. Retailers do not warrant any defective heaters.

Owners Registration Card

Make of Boat _____ Model _____ Length _____ Year _____

Make of motor _____ Motor size _____ Single _____ Twins _____

Boat stays: In the water _____ on a lift _____ on a trailer _____ other _____

Primary Use: _____ Cruising _____ Fishing _____ Water Sports _____ Transportation _____ Commercial _____ Other _____

Model Number (on top of box) _____ Heater Serial Number (on bottom of heater) _____

Place of Purchase _____ Date of Purchase _____

Owner Name _____

Address _____

City _____ State _____ Zip _____

Email Address _____ Phone _____

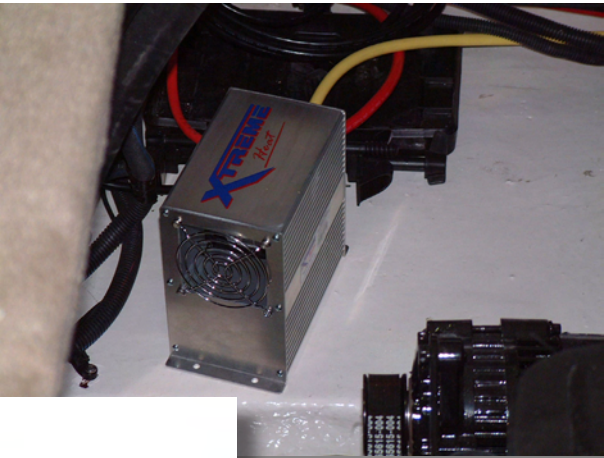
Comments _____

I have read and understand the above warranty (Signature) _____

Mail to: Customer Service Dept, Xtreme Heaters, 980 Gainesville Highway, Buford, GA 30518

Also available online at <http://www.xtremeheaters.com/warranty.htm>







980 Gainesville Highway • Buford, GA 30518 • PHONE (404)435-4328 • FAX (678)550-9876

www.XtremeHeaters.com